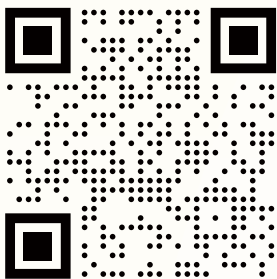


# OUTDOOR ROUTER



## EZR34 SERIES QUICK GUIDANCE



[EZR34.outdoorRouter.xyz](http://EZR34.outdoorRouter.xyz)

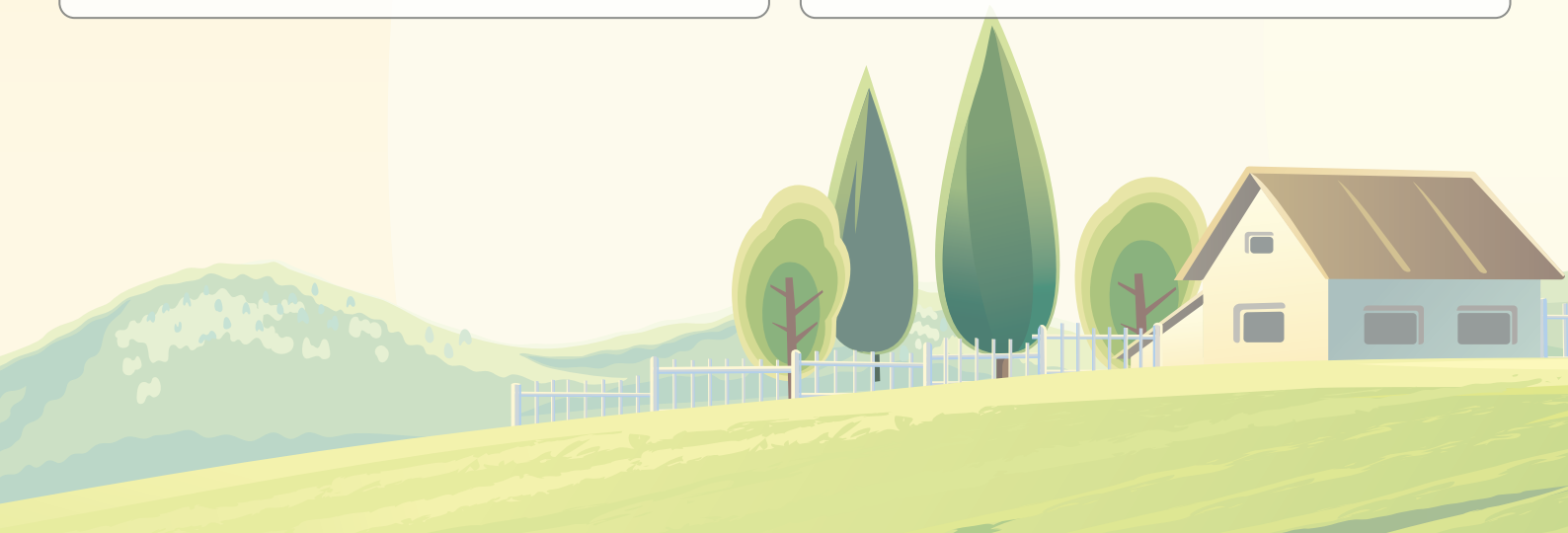
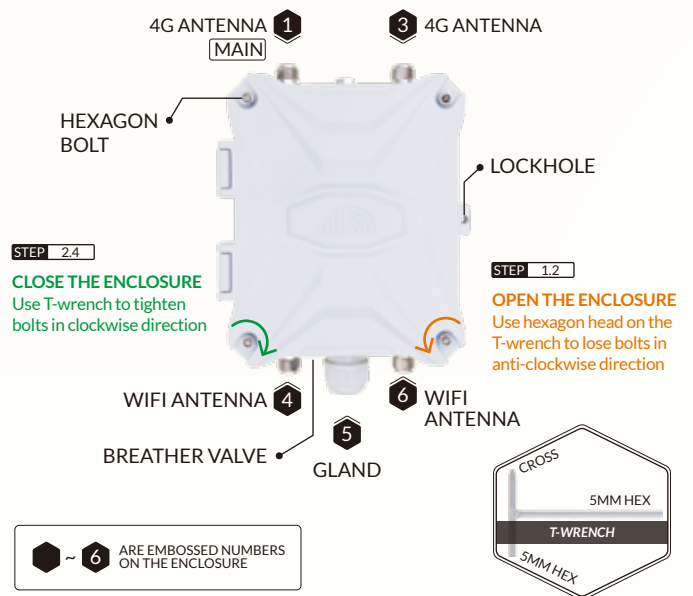
Scan QR code or visit URL link to see the complete edition of the online manual.

## PACKAGE CONTENTS

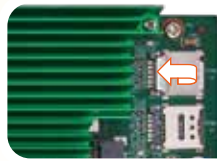
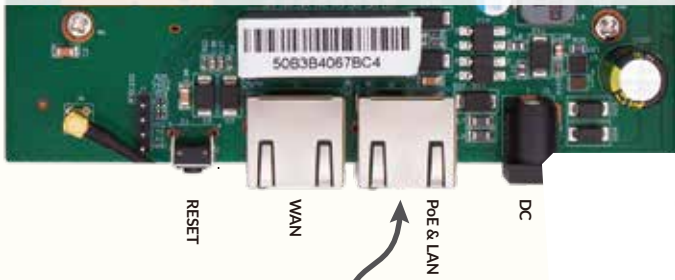
**STEP 1.1** Check and count the package contents.

Outdoor Router	4G & WiFi Antennas	10-Meter LAN Cable
PoE Injector	L-Bracket & T-Wrench	Mounting Kit

## INTERFACE OVERVIEW



## MOTHERBOARD SIM CARD & PoE



### STEP 2.3 PoE

- Take cap off from the gland. Push out the stopper from the inside of the gland.
- Take one end of the LAN cable through the cap.
- Put LAN cable through the barrel screw and plug in the PoE & LAN port on the motherboard.
- Clamp the stopper on the LAN cable and settle it in the barrel. \* The smaller end faces the outside.
- Turn the cap in the clockwise direction to tighten it on the barrel screw.
- Connect another end of the LAN cable to PoE port on the PoE injector.
- Connect AC plug on the PoE injector to electrical outlet until set up all the below steps (to 3.3).



### SIM CARD STEP 2.1

#### TURN OFF POWER BEFORE INSERTING THE SIM CARD

- Locate SIM#1 slot on top right corner .1 Hold and slide left to open the SIM lid
- Put a Nano SIM card in the SIM card slot .2 The gold pins should be face down
- Cover the SIM lid and slide right to lock it .3

#### \*WARNINGS\*

- Use activated SIM card in the router \*
- Make sure the SIM card is working well \*
- Insert SIM card in the SIM1 slot \*

### STEP 2.2

Make sure the mobile carrier has a strong enough signal in your area

The modem sensitivity is -101dBm equals to approx. 2-bar on a phone

Refer to <https://ezen.link/signal-test>

**NOTE**  
To exchange the AC plug, press and hold the Push button then push the AC plug upward to take it off.

### 8. ETHERNET

- Connect a computer to the LAN port on the PoE injector to get the Ethernet connection.
- To use another router, connect its WAN port to the LAN port on the PoE injector.

### STEP 2.4

Close the lid & press it with your hand. Use T-wrench to tighten four pieces hexagon bolts on the lid.

Ensure no gap after tightening the screws!



### ANTENNAS STEP 2.5

Locate embossed numbers 1~6 on the top & bottom sides

1 & 3 for 4G antennas  
4 & 6 for WiFi antennas

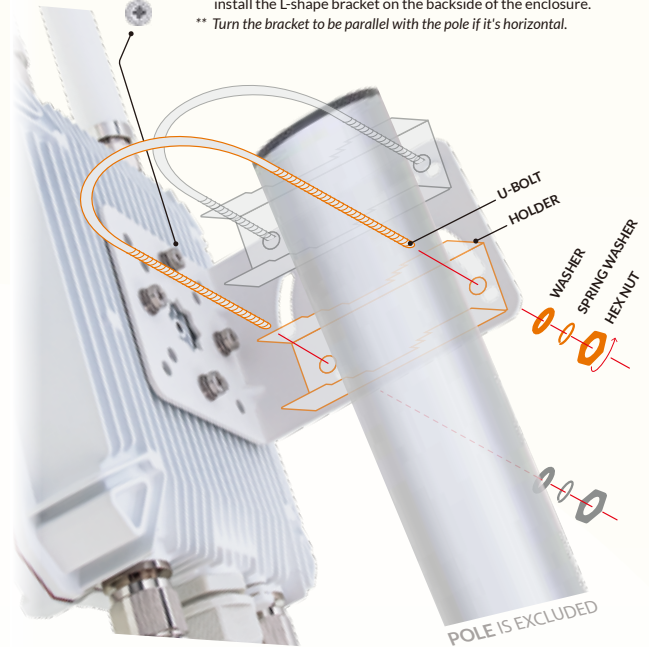
Turn the hex part on the antennas in the clockwise direction to tighten them



## BRACKET & MOUNTING

- STEP 3.1** Walk around with a mobile phone and check the network type and signal bars. Then choose a location with a 4G LTE network reception and strong signal reception.

- STEP 3.2** Use the cross end on T-wrench and M6 cross-head screws to install the L-shape bracket on the backside of the enclosure.  
\*\* Turn the bracket to be parallel with the pole if it's horizontal.



### STEP 3.3 INSTALL ON A POLE

Find a pole with diameter of Ø35~50mm.

- Clasp the pole with U-bolts and holders, attach them on either side of the L-shape bracket.
- On another side of the bracket, put washers, spring washers, and hex nuts on U-bolts. Tighten the nuts with an M10 spanner.

## FIRMWARE CONFIGURATION

- STEP 4.1** After turning on power (step 2.3.7), use a phone or computer to join the Wi-Fi hotspot **Outdoor-WIFI-xxx** or connect the computer to the **LAN port** on the PoE injector (step 2.3.8).

Open a web browser, enter the router IP <http://192.168.30.1> on the address bar.

Click the **Login** button to access the admin panel.

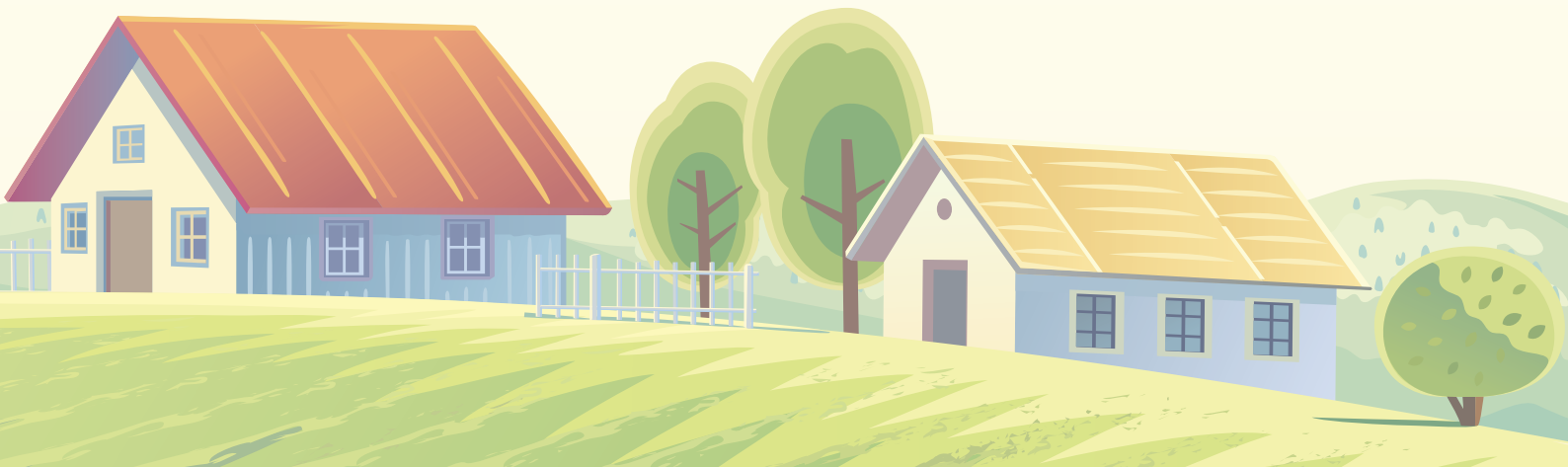
\* If unable to access, recheck the Wi-Fi and LAN connections and clean the web browser cache.

\*\*\* <http://192.168.30.1>

AUTHORIZATION REQUIRED

Please enter your router password!

Password



**STEP 4.2** After accessing the router admin panel, navigate to **System > System** from the top menu. Under the tab of **General Settings**, click the **Sync with browser** button to sync the time.

Router password

Go to **System > Administration**, input new custom **router password** twice, and save settings. *\*Keep the new password in a safe place.*

**STEP 4.3** Go to **Network > Wireless**, click the **Edit** button on **SSID: Outdoor-WiFi-xxx (Mode: Master)**. Scroll down to **Interface Configuration**, change Wi-Fi SSID on **ESSID** field.

Wi-Fi SSID & password

Click the tab of **Wireless Security**, choose **WPA-PSK/WPA2-PSK** on **Encryption**. Input the Wi-Fi password on the **Key** field, then save settings. **V4** is the 2.4GHz hotspot, and **V5** is the 5.8GHz hotspot.

#### STEP 4.4 MOBILE MODEM

- Status** On the front page, check the modem status and the signal strength on the right-side **DEVICE** section.
- Interface** Go to **Network > Interfaces**, check the IP and traffic flow of the **MOBILE** interface.
- APN** It is non-necessary to change APN unless the mobile carrier requires to do so. Click the **Edit** button on the **MOBILE** interface to change the APN settings. *\* Check the APN tutorial on <https://ezen.link/APN>.*
- Protocol** It is also not necessary to change the protocol unless default one is no supported. *\* Check the protocol tutorial on <https://ezen.link/protocol>.*

5. Debug	Status	Solution
	Disabled	Check if the SIM card is locked.
	Connection attempt failed	Re-insert the SIM card and check the signal strength.
	Network device is not present	The Guardian module is resetting. Wait for 2-3 minutes.
	Connected but no internet	Check if the data plan supports use on a 4G router.

#### STEP 4.5 LOCAL NETWORKS

Turn on DHCP mode on the phone or computer to obtain a local IP address from the 4G router. To use a static IP address, please comply with the below format.

Computer IP	192.168.30.100-249 (pick one IP from 100-249)
Subnet mask	255.255.255.0 (24 on Windows)
Gateway (Router IP)	192.168.30.1

#### STEP 4.6 RECOVERY

Reboot

The router might have glitches after running for days or weeks. Reboot the router could solve most of the issues. You may go to **System > Reboot** or unplug the PoE injector to reboot the router.

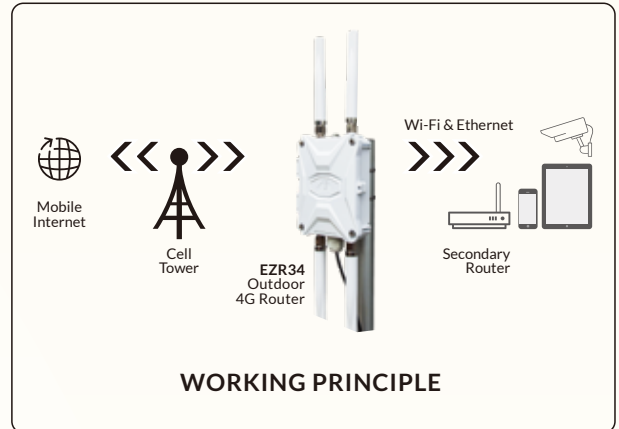
Soft Reset

If the router works unstable after made changes to the firmware, please go to **System > Backup / Flash Firmware**. Click the **Perform reset** button to run a soft reset.

Hard Reset

If unable to access the router admin panel, please run a hard reset. When the device is powered on, tap and hold the **round Reset button** for 5 seconds. Then release it and **wait for 4 minutes** to boot up.

**! IMPORTANT ! DO NOT TURN OFF POWER WHILE RESETTNG THE ROUTER!**



#### WORKING PRINCIPLE



Thanks for reading! If you have questions while using the router, please check the online manual at [ezr34.outdoorrouter.xyz](http://ezr34.outdoorrouter.xyz)

Please feel free to contact us if you need any further assistance.