

## Installation Guidance of

## LOGARITHM YAGI ANTENNA

Logarithm Yagi Antenna is a high-gain wide-band antenna which covers all of 2G, 3G, and 4G cellular frequencies. It can efficiently improve signal reception on the 4G outdoor router.

Frequency: 698-960/1700-2700MHz

Measurement: 390x210x65mm

Connector: N-Female

Gain: 9.5dBi

Radiation Patterns: H-Plane and E-Plane

Each set of Logarithm Yagi Antenna including:



2 x U-Bolt



2 x Holder



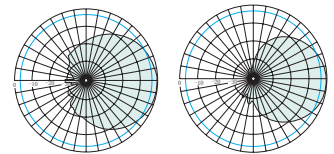
4 x Bolts



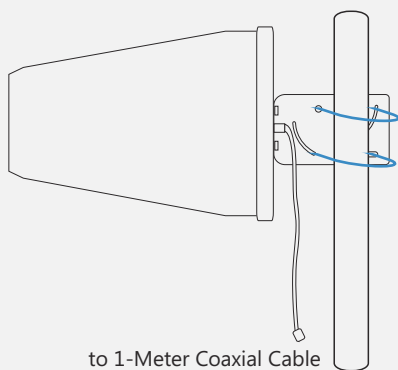
4 x Washer



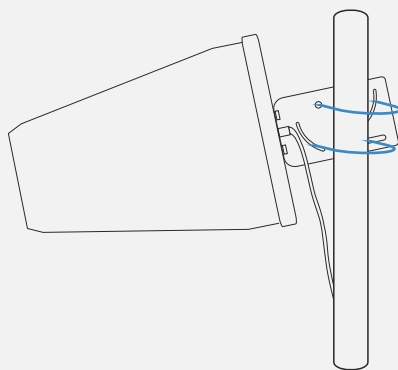
4 x Spring Washer



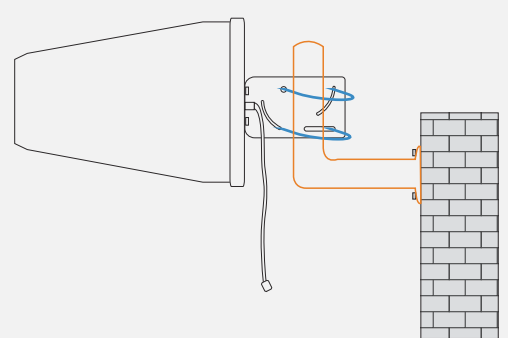
## INSTALL ON A POLE



## ADJUST DIRECTION



## INSTALL ON WALL



Please refer to above sketches while installing a logarithm antenna:

- 1> Put the antenna on the back side of a pole on a suitable level, then clip by Holders in another side of the pole.
- 2> Use U-bolts to hold antenna on pole by through Holders and antenna holes.
- 3> Put on and fix Washers, Spring Washers, and Bolts on U-bolts from the back side of antenna mount stand.

\*\* You can slide U-bolts to adjust the direction of the antenna.

\*\* To install the antenna on a wall, you need to buy a bracket to replace the pole.

Please choose the location which can capture strongest signals before installation.

Remarks: The poles and bracket are not included in the package of logarithm antenna.

